

Hauraki Gulf Symposium ‘Restoring Mauri’ Dr Dan Hikuroa



THE UNIVERSITY OF
AUCKLAND
Te Whare Wānanga o Tāmaki Makaurau
NEW ZEALAND

ARTS

YOU ARE INVITED TO

MAKING WAVES

PROTECTING AND RESTORING THE HAURAKI GULF MARINE PARK

2019 HAURAKI GULF / TĪKAPA MOANA MARINE PARK CONFERENCE
10:00AM - 8:00PM TUE 27 AUGUST
AUCKLAND MUSEUM

Bookings essential
+64 9 205 7048 or aucklandmuseum.com
\$65 adults, \$25 students
+ \$3 booking fee (includes catering)



Hauraki Gulf
Marine Park
Ko te Pātaka kai
o Tīkapa Moana
Te Moananui-ā-Toi



Hauraki Gulf Forum
Tīkapa Moana
Te Moananui-ā-Toi

WHAT IS MĀTAURANGA MĀORI?

- Mātauranga Māori spans Māori knowledge, culture, values and world view
- Holistic knowledge – humans, nature and spirit world interconnected in a kinship based relationship
- Identity drawn from the land, forests, waterways, oceans and air
- Compiled over generations
- System to test and generate new knowledge
- Product of dynamic system

(Hikuroa et al. 2011, Hikuroa 2017)



Mātauranga Māori

WORLD VIEW

“Cultures pattern perceptions of reality into conceptualisations of what they perceive reality to be: of what is to be regarded as actual, probable, possible or impossible. These conceptualisations form what is termed the “world view” of a culture. The World View is the central systemisation of conceptions of reality to which members of its culture assent and from which stems their value system. The world view lies at the very heart of the culture, touching, interacting, with and strongly influencing every aspect of the culture” (Marsden in Royal, 1998).



World used to be flat

MAURI



Tikapa Moana/ Te Moana a Toi Hauraki Gulf Marine Park Act 2000:

“...to promote integrated management and the protection and enhancement of the Hauraki Gulf.”



State of our Gulf 2017

Hauraki Gulf / Tīkapa Moana / Te Moana-nui-a-Toi
State of the Environment Report 2017



Hauraki Gulf
Marine Park
Ko te Pātaka kōi
o Tīkapa Moana
Te Moana-nui-a-Toi



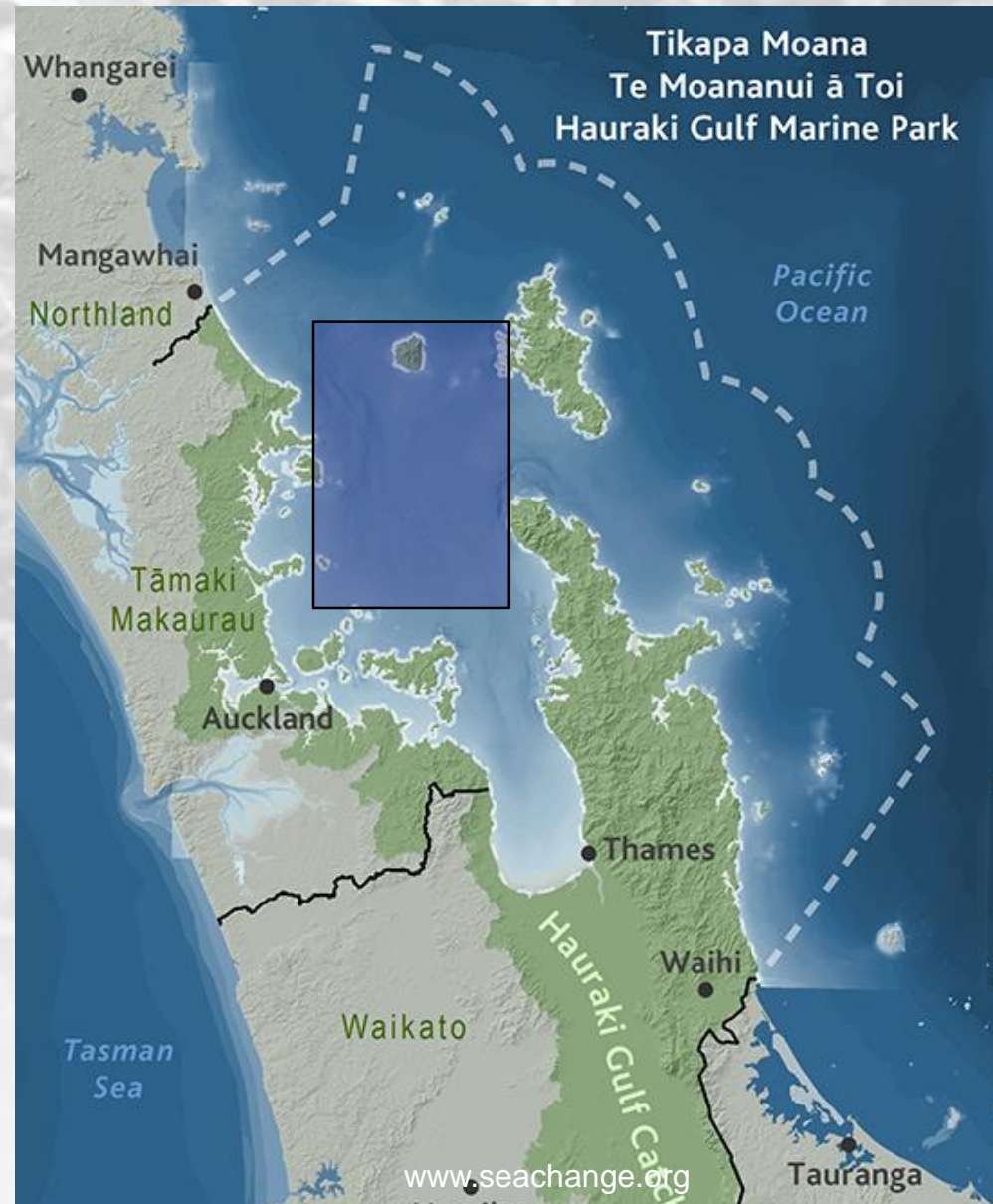
Hauraki Gulf Forum
Tīkapa Moana
Te Moana-nui-a-Toi





Tikapa Moana/ Te Moana a Toi Hauraki Gulf Marine Park Act 2000:

“...to promote integrated management and the protection and enhancement of the Hauraki Gulf.”



Tikapa Moana/ Te Moana a Toi Hauraki Gulf Marine Park Act 2000:

“...to promote integrated management and the protection and enhancement of the Hauraki Gulf.”





What is Aotearoa's blue economy?

(a sustainable marine economy)

Innovation

Research and development is increasing the sustainability of existing industries and encouraging new sustainable industries and products, eg health products and organic fertilisers.



Shipping and transport

New Zealand ports are developing renewable energy, waste reduction and zero-carbon initiatives, and Kiwi companies are developing battery powered electric ferries.



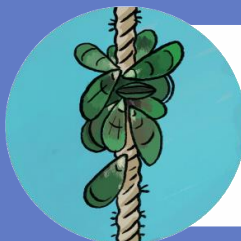
Marine eco-tourism

Sustainably managed whale watching, swimming with seals and dolphins, scenic cruises, diving and snorkelling, waka ama, kayaking and fishing charters are a distinctive feature of Aotearoa's blue economy.



Aquaculture

Aotearoa's aquaculture industry has developed A+, a world-class sustainable management framework, that commits mussel, salmon and oyster farms to a raft of sustainability goals including healthy ecology, responsible waste management and iwi participation.



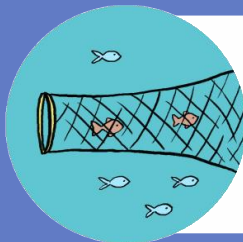
Marine energy

Tidal flows, waves and offshore wind are potential sources of renewable electricity. In New Zealand, these technologies are in the early stages of development.



Fishing

Sustainable fishing – commercial, recreational and customary – means leaving enough fish in the ocean, respecting habitats, and ensuring people who depend on fishing can maintain their livelihoods. Commercial fishers are increasingly investing in technology (eg precision seafood harvesting), and iwi leadership is driving sustainability improvements.



The Sustainable Seas Challenge is helping to grow Aotearoa New Zealand's blue economy by:

- Identifying the attributes of successful blue economy businesses
- Exploring how mātauranga Māori supports growth of a blue economy
- Developing blue economy performance measures based on marine ecosystem health
- Creating new opportunities for sustainable growth through research and innovation

National
Science
Challenges

SUSTAINABLE
SEAS

Ko ngā moana
whakauka

MAURI

G.I.F.T Gulf Innovation
Fund Together

Gulf

Innovation

Fund

Together

About Us

Creating Ripples, Making
Waves

MAURI

“Waters fit to swim in at all times, with thriving marine eco-systems that provide sustainable kaimoana resources to a Ngāti Whātua Ōrākei community who have strong daily presence in and on the bay as users and kaitiaki”

Ōkahu Catchment Restoration Plan





Mauri ora!