

HE PAKU TIROHANGA ATU

# Te Āhua o Tikapa Moana 2173

Tikapa Moana / Te Moananui-a-Toi

Te Pūrongo mō te Oranga o te Taiao i te tau 2173



**Hauraki Gulf  
Marine Park**  
Ko te Pātaka kai  
o Tikapa Moana  
Te Moananui-ā-Toi  
20 years ngā tau e rua tekau



**Hauraki Gulf Forum**  
Tikapa Moana  
Te Moananui-ā-Toi

He Whakarāpopototanga Matua ā-paki tēnei i te pūrongo mō te Āhua o Tikapa Moana hei te tau 2173. Ka whāia te tirohanga a tētahi tumu kōrero o mua nō anamata kia titiro whakamuri atu ki te hītori o Tikapa Moana, me te whakaatu i te āhua o tā tātou whakatutuki i ngā mahi whakaora e tino mīharo ana. E ngākau rorotu ana te paku tirohanga atu ki te anamata pae tawhiti e nui nei ōna tūmanako, e whirinaki ana ki ngā mahi ngātahi pākaha hei te pae tata, hei te pae tū rānei. E tūmanako ana mātou ka miramirahia e tēnei aronga ētahi mea whakakūkā e here ai te huringa nui whakaharahara e mātua hiahiatia ana ināianei kia angitu ai.

– Ahorangi Simon Thrush (Waipapa Taumata rau)  
& Ahorangi Conrad Pilditch (Te Whare Wānaga o Waikato)

***Kia whakatōmuri te haere whakamua.***

*Kei te hīkoi whakatemuri ahau ki te anamata,  
kei te ū tonu aku karu ki te wā kua hipa.*

I te tīmatanga ko te kore.

Kātahi ka ahu mai te pō, ka ngaoko a  
Ranginui rāua ko Papatūānuku.

Nā tā Tāne Mahuta whakawehe i a rāua, ka puta te  
ao mārama, ka puta mai ngā tamariki a Rangi rāua ko  
Papa, tae atu ki a Tangaroa, ki te atua o te moana.

Ka hoki te whakapapa o te Māori ki ngā atua, ā, ka anga  
atu ki te anamata me te aronga nui ki taua whakapapa.  
Koinei te tirohanga e arohia ai te anamata, tae atu ki te  
anamata o Tikapa Moana, o Te Moananui-a-Toi, mō te mauri,  
mō ngā mātāpono, mō ngā tikanga, mō te kaitiakitanga,  
mō te mātauranga, mō te wairua, mō te ora anō hoki.



Ināianeī, kua ora, kua whakaputaputa hua hoki a Tikapa Moana. E ora haere ana ngā momo rahi, he roa te ora, e noho ana ki te papa moana ki te rua-hauturu ki tai o Tikapa Moana. Ko ngā wāhi kanorau koiora nui o Tikapa Moana – e pātata ana ki Hauturu o Toi, ki Aotea, ki te korou o Colville hoki, e uaratia whānuitia ana hei wāhi e tūhonohono atu ai ki te ao tūroa, ki te whakapakari hoki i te oranga ā-ahurea. Kei te piki haere te tāpoi, te pūtaiao kirirarau me te noho rumaki ki te ao tūroa, ehara i te mea mā te ruku anake, engari kē hoki mā te tipu haere o te tuku i ngā waka whakatakere whaiaro, i ngā waka motuhake mamao mō raro iho i te wai.

I Tikapa Moana ki uta, i ngā wahapū hoki, nā te whakahaere whenua, nā ngā rongoā tiaki taiao hoki e aro ana ki te pikinga o te pae moana, kua pai ake ngā nōhanga moana; kua toro whakateuta ngā mānawa, ngā kūkūwai paritai me ngā papa paritai hei wāhanga mō tā tātou urupare ‘whakatahi e whakahaerehia ana’ i runga i te pikinga ake o te pae moana. Ināianeī kua kitea te whakatūnga mai anō me te whakapikinga ake anō o ngā taupori o ngā manu takutai pīrere i panaia ai i mua atu nā te huringa o te āhuarangi, nā te ngaronga iho hoki o te nōhanga. Kua pai ake te mārama o te wai ki Tikapa Moana ki uta, nā reira, kua horapa haere anō ngā papa karepō, ngā ngahere rimurapa hoki tae atu ki te oranga tonutanga me te whakarahinga ake o ngā mahinga mātaītai kua whakarauoratia. E eke tonu ana ngā mahi ki tua ake o tā Te Rūnanga o Tikapa Moana i whai ai mō te whakaoranga mahinga mātaītai. Ināianeī, he pānga tāpiripiri e puta mai ana i te nui o te whakaora i ngā tini momo mātaītai, ā, e whakaaturia ana i tēnei pūrongo te taunaki hou o ngā taupori e ukauka ana i a rātou anō, kua kore e hiahia ki te huaranga hohe.

# Te āhuarangi moana

Kei te huri haere tonu te āhuarangi ā-moana o Tikapa Moana kia hāngai ki te aituā āhuarangi o ngā tau waenga o te rautau 2000. Ko ētahi o ngā pānga kua mau ko:

## Ngā āwhā

Kua nui ake te pākaha me te auau o ngā āwhā

## Te paemahana

Kua nui ake ngā paemahana ā-moana me ngā pānga ā-whētuki wera

## Te pākawatanga

Kua iti iho te pH o te moana i whakakinohia ai e te whakahaumakotanga, e te parakiwai hoki

## Te pikinga o te pae moana

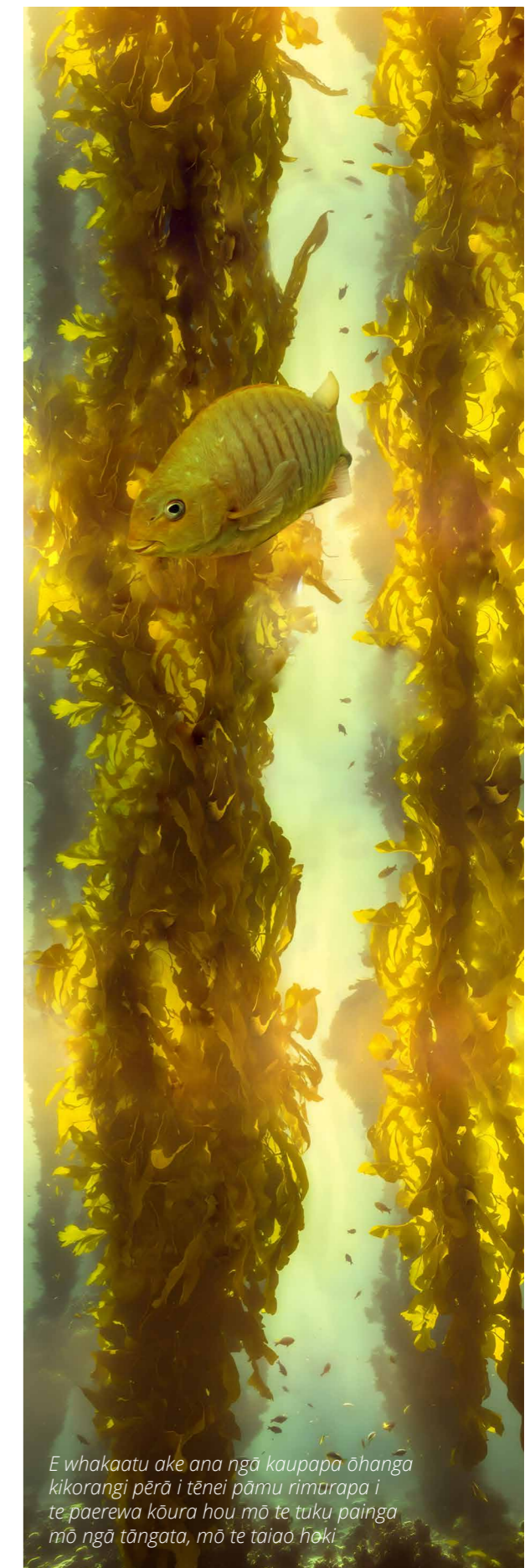
Ko te āhua nei, kua matatihi te pikinga tere o te pae moana i te tau 2075 whai i muri i ngā tini tekau tau o ngā kaupapa ā-ao hei whakaheke i ngā tukuwaro hei aukati hoki i te mahana haere, nā reira i tukuna ai ngā ākau me ngā hāpori takutai ki te whakatika anō i a rātou. Hei aha koa, kei te āta aroturuki hoki mātou i ngā āhuatanga kei Tikapa Moana, ā, kei Te Kōpakatanga ki te Tonga anō hoki.

## Ngā nekehanga o ngā au moana me ngā puna kai

Kei tōna 50 km te neke whakateraki o te Au Moana o Tāmaki Makaurau ki te Rāwhiti. I mua noa atu i tere ake taua au whakawhiti atu i Te Tai-o-Rehua, ā, i muri i tana huri i Muriwhenua ka totoe ake hei ētahi au kōmiro e pā kaha ana ki te āhuarangi moana o te tai rāwhiti mā raki. Nā te tere whakateraki o te au i ngoikore ai ngā pānga o ENSO ki Tikapa Moana, i heke ai te auau o ngā momo hou e taetae mai ana i te takiwā pūrū, i Ahitereiria rānei, i roa ake ai hoki te wā e noho tonu mai ana ngā wai i Tikapa Moana. Nā te pūrū haere o te āhuatanga mātāi moana o nāiane i Tikapa Moana i piki ai ngā taupori o ngā whai Manta e tere ana i Tikapa Moana ki tai, waihoki, e hauora tonu ana te rāngai tohorā Brydes engari ka tere atu ki waho o Tikapa Moana, ki reira kai ai. Ahakoa kua neke atu ngā papa kai mō ngā manu moana o Tikapa Moana, nā te whakaora i ngā wāhi mahi kōhanga, i ngā taunga i manawaroa tonu mai ai aua momo. E noho taurite tonu ana te whakaputa hua a Tikapa Moana me te tuku i ngā rawa kai mā te tangata, nā te āhua o te unu rawa i āhei ai tā tātou whai tonu kia manawaroa ngā kāhui me te tautoko hoki i te mahi hauropi a ngā momo e kaiapohia ana.

## Ngā Mahinga Ika me te Ahumoana

Mai i te wā i mutu rawa iho te tō kupenga hao ika, me te hirou papamoana i te tau 2025, nā tā te kāwanatanga tohutohu, i runga hoki i ngā huringa o te whakaaetanga ā-pāpori me te korenga o te haumitanga ki te tauwhiro mai, ki te whakakapi hoki i ngā waka tawhito, kua kitea noatia te kanorau haere me te whakakore i te kaporeihanatanga o ngā mahinga ika. Ko ā tātou mahinga ika ā-arumoni ki te aho roa, ko ngā mahinga ruku tipa me te kina, e nui nei te ura ā-pāpori, ā-taiao hoki, e mahi tonu ana i runga i te āhua ki ngā tapuwae ā-hauropi e whakaaetia ana (arā, ki ngā pānga o tētahi mahi puta noa i te pūnaha hauropi). E hohe ana te tūhono atu a ngā kaihao ki ērā atu hunga whai pānga mō te wānanga tahi i te whakahaere whānui ake o Tikapa Moana i runga i te te horopaki o te tapuwae ā-hauropi me te whakamahi i ngā aromatawai tūraru ā-pānga tāpiripiri. E mahi ana hoki ngā kaihi ika ā-rēhia ki waenga tonu i ngā pou tarāwaho e pā ana ki te whakahaere ā-torowhānui, ā, mā te mahi hei kaipūtaiao kirirarau e tāpirihia ana e rātou he raraunga whaipāinga ki ā tātou tauira o Tikapa Moana mā ngā kitenga, mā te tuku hoki i ngā matatopa ā-manu, ā-raro wai anō hoki. Ko te whakatipu rimurimu hei kai, hei rongoā taiora, hei putunga waro anō hoki e urupare tonu ana ki ngā nekehanga ā-mātāi moana, ki ngā nekehanga āhuarangi hoki. Nā tēnei whakaritenga anō i taea ai te tū mai o ngā auahatanga hou ki te ahumahi hei whakaheke i tō rātou tapuwae ā-hauropi i te wā tonu e whakakanorau ana i ngā hua, i ngā ara whiwhi mahi hoki. Kei te kanorau haere tonu te ahumoana mātaitai mō te urupare atu ki ngā nekehanga o te mariu kiritaki, mō tō te ahumahi tūnga e tipu haere nei hei tautoko i te whakaoranga mātaitai huri noa i Aotearoa. Kei te whakaritea tonutia e ngā mahi ahumoana pūkahu wai i runga whenua ki ngā mānia o Hauraki te unuhanga kau o ngā taiora mai i te kokoru o Tikapa Moana, e mārama ake ai te te wai, e kaha ake ai te tipuranga ake o ngā tipu ki te papamoana, e heke iho ai hoki ngā pānga, te tūraru hoki o te nui rawa o ngā taiora whāngai i te pūkahu wai.



E whakaatu ake ana ngā kaupapa āhanga kikorangi pērā i tēnei pāmu rimurapa i te paerewa kōura hou mō te tuku painga mō ngā tāngata, mō te tāiao hoki.



He mea āwhina ngā nōhanga hei taunga, hei kōhanga hoki kua hangaia hei wāhanga mō te whakatāhi e whakahaerehia ana kia ora ake ai ngā kāhui manu o te takutai o te moana hoki.



*Ko te 98% o te kirihou o Tikapa Moana i whakaurua i ngā tau o waenga i te 1950 ki te 2050; he nui whakaharaha te whakahakenga iho o ngā whāurunga nā ngā hangarau hou*

## Ngā whakareretanga parahanga

He raru nui tonu te pānga o te pikinga o te pae moana me te auau nui o ngā āwhā. Kei te whakatārewatia tonutia anō ngā parakiwai whakareretanga kei ngā pūwaha, kei Tikapa Moana ki uta hoki, i ngā pānga āwhā ka pā atu ki te nui o te aho, e raru ai ngā mātaitai me ērā atu kaitātari taiora. Kei te aro tonuhia te whakareretanga iho o te huranga me te pakarutanga mai o ngā tini parahanga, o ngā tini ruapara o mua, whakatūria ai i te taha o ngā awa, o ngā wahapū hoki i ngā tau o mua.

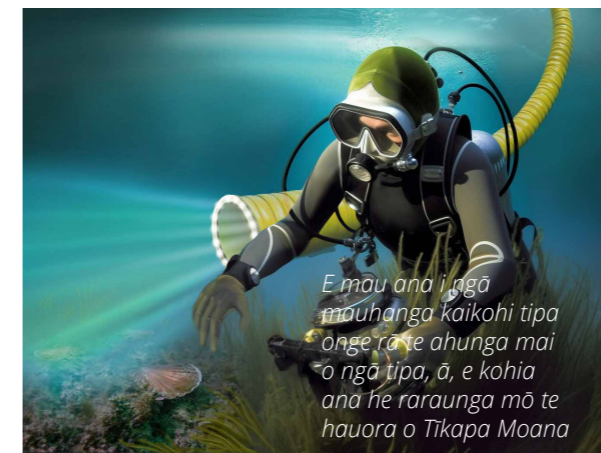
Ahakoā ngā āwhā e haere tonu ana, kua iti iho tonu ngā whāurunga parakiwai hou nā te whakauruunga o ngā mahi whakahaere i te riu hopuwai e mahia ana i te riu hopuwai o Tikapa Moana; e kitea ana ngā ia tino kaha o te ora haere i ngā awa o Piako, o Waihou hoki e hopu mai ana i ngā wai o ngā mānia o Hauraki. E hono ana tēnei ia ki ngā huringa o ngā tikanga pāmu, ki te kaha o te whakamahi-whenua, ki te whakakaha i te whakatōnga tipu ki ngā tahatika i tipu anō ai ngā ngahere kahikatea me ngā nōhanga kūkūwai ā-waitai kei ngā paenga. I ngā wāhi tāone, nā te whakatinanatanga ake o te tauira “tāone hautai” e whakamahi ana i ngā tūāhanga kākāriki, waihoki, nā te hoahoa tāone e tiaki ana i te wai mō te tāone whānui o Tāmaki Makaurau kua piki ake te kounga o te wai āwhā, kua heke iho hoki te

nui o taua wai āwhā rā, ā, kua āwhinatia hoki te whakahaeretanga o ngā pānga ā-waipuke, ā-āwhā hoki. Kua heke haere tonu te whakawhānuitanga ā-tāone me ōna mahi ā-whenua e rahi ana, e tuwhera ana hoki, i a tātou e whakatau uara kairangi ana ki ngā wāhi e tuwhera ana, e kākāriki ana hoki mō te mahi ā-rēhia, mō te hauora, mō te whaihua hoki o ērā hei whakamauru waipuke, hei whakaputu waro, hei āhuru mōwai hoki mō te kanorau koiora. Kua heke te nui o ngā moroiti kirihou whāiti e hou nei, e uru ana ki Tikapa Moana nā te huringa o ngā tikanga i ngā wāhi tāone, nā ngā auahatanga ki ngā ahumahi hao ika me te ahumoana hoki kua whakaūngia nā ngā pēhi a ngāi kiritaki. Kei te rauiri tonu ā tātou pūnakunaku koiora mō ngā moroiti kirihou i ngā wahapū ā-tāone. Kua tino mimiti ngā kukū matū tāoke ā-tāone i runga i te mātai pūhanga-tautaiāo hou, i runga hoki i te nekehanga atu i tā te hinu, i tā te penehīni tāhawahawa i ngā mata huarahi. He raru whakaāwangawanga tonu ngā waiwaro penehori (PAHs) me ngā moroiti kirihou mai i ngā taea. Nā te kaupapa here, nā ‘Sunk Ships mean Slicks’ i te haumarua o te tangohanga o te hinu me ngā paenga; i tīmata mai ēnei tukanga i te tangohanga mai o te hinu i te awa o Niagara (2030), ā, ko te kōura i tikina ake i tērā i āwhina ki te utu i te kaupapa here.

# Te whakapakari i te manawaroa mā te whakamahi i te whānuitanga o te kanorau o ngā rautaki whakamauru

## Te Ōhanga Kikorangi me ngā māketē Waro

E whakaaturia ana i tā mātou pūrongo, nā te pikinga tonutanga o te ahumoana mātaitai me te rimurapa, nā ngā mahinga tipa onge, e arahina ana e ngā iwi, nā te whakatipu ake i ngā pūtoi mahi koiora, nā te whakamauru ā-āhuarangi, nā te tāpoi e kaha-whakaora ana, e tautaiāo ana hoki, nā te whakaputa hiko, nā te iti iho hoki o te whakamahinga rawa, kua huri atu a Tikapa Moana hei kaiwhakamimiti ā-tapeke i te waro. Ehara i te mea he mea tau-āhuarangi noa iho ēnei mahi engari kē hoki e whakatuānui ana ēnei i ngā ohaoha unu o mua noa atu, ā, e whakaterahia ake ana e ēnei mahi te whakaoranga o Tikapa Moana. E whakatuwhera ana hoki ā tātou mahi whakamauru hei urupare ki te huringa o te āhuarangi, inarā ki te kokoru, ki waenga hoki o Tikapa Moana, i ngā ara pakihia hou e hono ana ki te whakakorenga o te CO<sub>2</sub>, ki te whakaputanga Omeka-3 i te whenua mai i ngā pūkohu wai-whāiti, ki ngā ara wātea o te urutaunga ā-takutai, o te mahi tahi anō hoki ki te taiao.



*E māu ana i ngā mahinga kākōhi tipa onge rā te ahunga mai o ngā tipa, ā, e kohia ana he raraunga mō te hauora o Tikapa Moana*

## Te mahi tahi ki te ao tūroa

Kua herea ngā pānga kino o te huringa o te āhuarangi e tā tātou whakaora riu hopuwai, e ngā rautaki mahi tahi ki te taiao hoki i te takutai, i herea ai hoki te parahanga ā-parakiwai, ā-taiora hoki, i heke iho ai hoki ngā pānga āwhā, i mauru ai hoki ngā pānga kino. Nā konei anō i matomato ai ngā papa kūkūwai paritai, ngā papa mānawa, ngā papa karepō, ngā papa rimurapa anō hoki o Tikapa Moana, e whakamimiti ana i te CO<sub>2</sub> mai i ngā wāhi e pātata ana, e tū mai ai hei āhuru mōwai pātata i ngā pānga kino o te pākawatanga o te moana. Waihoki, he mea here ake te parahanga ā-taiora, ā-parakiwai hoki i ngā wai takutai o Tikapa Moana nā ngā pae mātaitai kua whakaorangia ake, nā te whakamahinga o ētahi atu momo e noho ana i te parakiwai hei whakarauora i ngā pūnaha kua parahanga, kua whakakinohia hoki.

## Tā te ao tūroa āwhina i ngā tāngata

Kua ara ake i te toronga atu, i te mātauranga me te whai wāhi mai a ngā tāngata ki Te Pātaka Kai o Tikapa Moana, ko te māramatanga pai ake, ko te manawarū hoki ki te āhua o ngā mahi tūturu i ngā pūnaha hauropi o Tikapa Moana ki te tuku atu i ngā tini mahi waiwai o te tautīnei mai i te oranga. I tōia mai te hunga e taua māramatanga rā ki te tirohanga ā-torowhānui ake o ngā hononga pāhekoheko me ngā pūnaha ka tautīnei i te ora, i te oranga hoki puta mai i Tikapa Moana. I te nui haeretanga o tō tātou mārama ki tā Tikapa Moana tautīnei mai i a tātou, kua kitea atu, ko te torowhānui o te whakahaeretanga me te kaiakitanga e kōkiri ana i ngā whakataunga karioi ake, i te arotahi nui ake kia ū tonu ki ngā tini painga kua ki ngā whakatauritenga whakakapinga māmā noa iho. Ko ētahi tauira e hāngai ana hei whakaatu i te āhua o tā tēnei kitenga i te ao tūroa āwhina i ngā tāngata, ko tā tātou whakahaere i te tārewa anō o te parakiwai, waihoki, ko ngā ara hoki kia whakapikihia ake i te whakakorenga iho o te CO<sub>2</sub>.

## Te whakatārewa anō i te parakiwai

Kua tino mārama tātou ki te pānga kino o te whakatārewa anō i te parakiwai ki te whakaputu waro, ki te mārama anō hoki o te waitai. Ka pā te mārama o te wai ki tā tātou rongo atu i te taiao, ki tā tātou pārekareka i ngā tirohanga ake i raro i te wai anō hoki, ā, ka herea iho hoki te tipuranga o te tipu me tana whakaputa hua. Kua whakaheke ake e ā tātou mahi whakahaere te whakatōhenehene i te papamoana, kua whakaungia anō te kaha o te papamoana nā te mahi whakaora ake, nā te whakanohonoho ake hoki, ā, kua whakaheke iho tā ngā awa kawē i ngā parakiwai ki ngā pūhatanga, ki ngā wahapū, ki ngā takutai anō hoki.

## Te rauiri i te CO2

Kua whakamahia ngā hangarau hei whakamauru i te pākawatanga o te moana tae atu ki te whakaurunga o ngā kohuke pērā i te oriwini (olivine), i te konupūmā pākawa waro hoki, e piki ai te pH, ina memeha aua kohuke ki te waitai, ki ngā wāhi e kitea ai he tūraru nui e pā ana ki te te pākawatanga. Kei roto i ēnei ko ngā wāhi e pāngia ana e te nui rawa o te taiora whāngai i te pākohu wai nā ngā whakareretanga mai i ngā whāurunga taiora nui e tipu ai ngā pūkohu ngaruru whakararu, e puta ai te CO2, nā te popo o aua pūkohu rā, e pākawa ai te wai. Ko te whakamātautau haere tonu i ngā hungahunga, i ngā kohuke korakora, pērā i te oriwini, ki ngā taiao o tātahi, o ngā papa waenga tai anō hoki, e whakaatu ana i ngā hua pai mō te āwhina ki te whakamauru i te nui rawa o ngā taiora mai rā anō, i te ngaronga atu hoki o ngā nōhanga kua kapi i ngā tipu whakamimiti i te CO2, nā te parakiwai tuwhene.



He whakamātautau ā-hiata oriwini koropungapunga hei whakaheke i ngā pānga o te pākawatanga o te moana

## Te whakawhanaketanga kaupapa here whakaaro nui

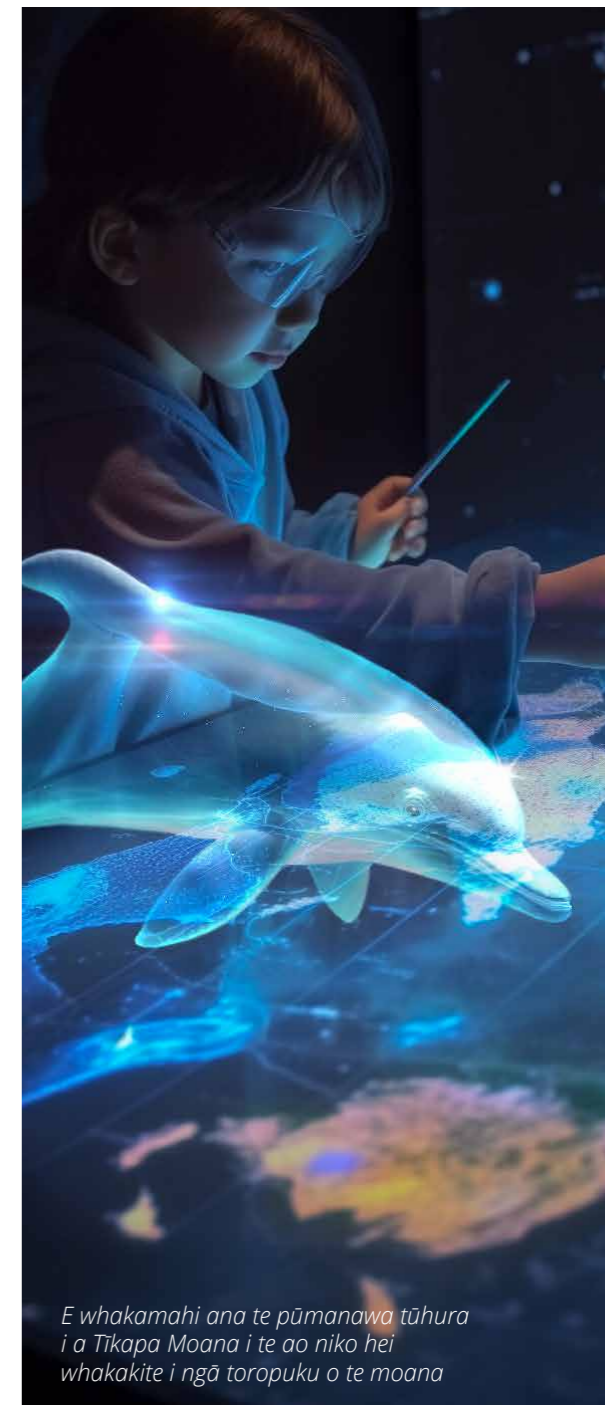
E haere tonu ana te kanorau haere o ngā auahatanga ōhanga kikorangi ki Tikapa Moana. Kua huri i te Kotahitanga o Ngā Iwi o te Ao te tikanga o te mātātangata mai i 'te taiao ki te tangata', mai i te whakaaro kaiapo o te rautau ruatau, kia pēnei kē, 'kei roto te tangata i te taiao' me tana whai tūāpapa pakari i te kaitiakitanga me te haepapatanga hei tiaki, hei whakaora ake hoki i te taiao. Nā konei i puta ai te huringa nui whakarahara ki te āhua o te noho, ki te āhua o te hanga i ō tātou ōhanga anō hoki e whakaorahia ai ō tātou pūnaha hauropi ki te hōkai tukipū e rahi ana. Kua noho mai tēnei hei whakaoho ohaoha nui ā-motu, otirā ā-ao hoki nā te whakaneke atu i ngā mariu, i ngā whakaaetanga hokohoko hoki.

## Te whakatinana i te kaupapa here

Kua noho tēnei hei kaupapa matua mō Te Rūnanga o Tikapa Moana i whakapakaritia ai nā te tūnga mai o te Kaunihera Tohutohu ā-Motu mō te Moana. Kua kōkiri tonuhia te pikinga o te mauri o Tikapa Moana nā te aroturuki i te mana hautū o Tikapa Moana, i te pou tarāwaho mō te hoa patui ā-Tiriti, i te wā tonu e tukuna ana te wāhi mō ngā auahatanga, mō ngā mahi e ngākaunuitia ana, e whakaaetia ana hoki e ngā hāpori kanorau o Tikapa Moana. I tukuna te mana tangata ā-ture ki Tikapa Moana i ngā tau o 2030, nā te Whakataunga mō te Wahapū o Waitematā. Nā te aranga ake o te tūhononga ki ngā mahi pai, me te tipu haere tonu o te mōhiotanga ki te waiwai o tā tātou whirinaki ki ngā moana, ki ngā koiōra moana, kua kīia a Tāmaki Makaurau ko ia te tāone nui e pai katoa ana i te ao mō te hunga e noho ngātahi ana ki te taiao, e whai hua ana ā-ahurea, ā-oahaoha hoki i te wā tonu e whakapaingia ake ana te hauora o te moana. Ko tētahi take matua i whakawhiwhia ai ki tēnei hōnore, ko tā tātou whakaae, ko tā tātou whakahāngai hoki i te mātauranga taketake, ko ngā ia pai o tā tātou aroturuki kariōi i te hauora pūnaha hauropi, ko te kaha o tō tātou mātau ki te moana me te urunga mai ki ngā tukanga whakatau, ko te kaha o tō tātou ōhanga kikorangi me te whai wāhitanga mai i ngā tāngata ki te pārekareka mai i a Tikapa Moana.

## Te hanga me te whakamahi i ngā pūtake mātauranga

Ināiane, e whakamahi ana ngā pokapū whakahaere i te nui whakarahara o ngā rangahau whaikiko ā-ao me te mātauranga kia whāngai atu he kōrero ki ā rātou nei whakatau, nā te whakamahinga o te pūtake o te mātauranga e whānui ana, e torowhānui ana hoki kua pai ake ngā whakatau e tōkeke ai te whakaaturia mai o ngā tini uara. E mahi tonu ana ngā kaipūtaiao moana i te taha o ngā mātanga o te mātauranga Māori – me te aronga kia whakawhanakehia te mātauranga hou e aro ana ki te āhua o te tere huri o ō tātou pūnaha hauropi moana i roto i te 200 tau kua pahure ake nei, me te āhua ka taea e ēnei ia mātauranga e rua e pakari ake ai tō tātou nei raukaha ki te urupare atu ki te huringa anō ā muri ake nei. E tino āwhina ana hoki ngā kaipūtaiao kirirarau i tō tātou mātauranga mō Tikapa Moana, inarā mā te Kaupapa Km2. Nā konei i āhei ai ngā kaipupuri waka ki te whitiwhiti i ētahi o ā rātou taputapu hao ika ki ngā matatopa me ngā kāmera o raro wai hei whakamahere i ngā nōhanga papamoana, me te tukunga o tēnei raraunga ki a IVS (Institute of Visual Synthesis) hei whakamahere, hei tautohu hoki i ngā koiōra, i ngā āhuaranga hoki e noho ana ki te mata o te papamoana rā. Mā ēnei mahere taipitopito whaitake ā-hauropi tātou i āhei ai te whakapai tonu ake i tō tātou mārama atu ki te whakaora o te papamoana i te whakatōhenehene o mua.



E whakamahi ana te pūmanawa tūhura i a Tikapa Moana i te ao niko hei whakakite i ngā toropuku o te moana



Kei te whakamahere te kaupapa km2 i ngā nōhanga, i te kanorau koiōra hoki o te papamoana rā me te tuku i te raraunga o taua wā tonu hei aroturuki i te hauora o Tikapa Moana

# Te tātari i ngā āhuatanga o mua – i pēhea rā te taenga mai ki konei

Te tātari i ngā āhuatanga o mua – i pēhea rā te taenga mai ki konei

I te titiro whakamuri atu i te āhuatanga o te Tikapa Moana o nāianei nei e kanorau ana, e ora haere ana hoki, kua taea e mātou te tautohu, ko ngā huringa nui, nā reira i tautoko te whakaoranga ake, i hāngai atu ki te tūhononga mai o te hunga ki te hauropi o Tikapa Moana, i arahina rā e ngā kaitiaki Māori, e ngā hapori pātata anō hoki, ko te huringa ki te mana hautū pai e aro whakamua ana, e aro ana hoki ki te mahi, ki te whakawhanaketanga mai anō hoki o te ōhanga e tino kikorangi ana. Ka taea te haurapa atu ngā kākano o te huringa ake mō Te Pātaka Kai o Tikapa Moana i ā tātou pūrongo tōmua mō Te Āhua o Tikapa Moana nō ngā tau 2000-2023. I pōturi te tīmatanga o te pai o te huringa i runga anō i te whakahaerenga me te mana hautū whakawehewehe i ara ake rā te wā o te pararūtiki i te uruparetanga atu ki ngā tohu whakatūpato kei ngā raraunga i whakaemihia nei. I huraina mai te hononga kore o mua i waenga i te raru me tana otinga i ngā tini kōrerorero, i ngā tini whakaaturanga pāpāho kua whakaputuhia nei, ā, ko ngā taunaki ko ngā āhuatanga pērā i te hekenga iho o ngā rauika tipa, i te korehāhā ā-whaitake o te kōura, o te hururoa hoki i Tikapa Moana, i te pāpātanga paku hoki o te hōkai moana rā kua whai tūnga whāomoomo nui. Ko

te hua tapeke, ko te tōnanawe o Aotearoa i te ao mō te toitū me te tiaki i te moana, i pā mai nei ki ngā rongu mō te whenua, ki te raukaha kia whakatutukihia ngā whāinga i whakaaetia rā e te ao, ki te horopū hoki o te toitū o tō tātou ōhanga kikorangi. Hei aha koa, nā tētahi raupapa o ngā mahi pai, o ngā mahinga ngātahitanga e whai wāhi mai ana ngā rōpū ā-hapori, ngā iwi, ngā whakahaere tūhake, ngā kairangahau anō hoki, i kōkirihia ai te tūtūnga whānui mai o te mahi whakaora ake. Me kore ake ngā iwi, i tu rā ki hei kaiārahi e tino whaitake ana i te whakatūnga rāhui kia wātea mai ai a Tikapa Moana kia ora ake anō ai. He mea nui hoki te tukuoha me tana tautoko atu i ngā mahi, i ngā hononga i waenga i ngā rōpū. I te tau 2024, kātahi anō i whakaturehia ētahi ture e te kāwanatanga hei whakauru mai i te huinga o ngā wāhi moana e tiakina ana nā Te Whakarauora i a Tikapa Moana.

I te pau haeretanga o te tau 2025 i kaha haere nei te ngangahu o ngā āhuatanga whakatau e rua, e whiria nei tētahi ki tētahi – arā, ko te ōhanga kikorangi, ko tā tātou urupare atu ki te huringa o te āhuarangi. I ahu mai te ōhanga kikorangi i te hiahia kia tuku ratonga te ōhanga ki ngā tāngata, ki te taiao anō hoki, kua i te monihua anake, me te whakaaetanga mai, ko te tikanga o taua wā i te whakangāhorohoro



2000-2025

2017 Tai Timu Tai Pari - Sea Change.	2021 Te Whakarauora i a Tikapa Moana (RTG).	2024 I whakatinanatia te kōtuinga o RTG MPA.
I mōhiotia tō tātou nei whenua huri noa i te ao hei whenua tonanawe mō te whāomoomo moana, ā, ka pāngia te rongu o te whenua, te raukaha hoki kia whakatutukihia ngā whāinga kua whakaaetia e te ao.	2022 Te wāhanga tuatahi o te whiriwhiri kōrero mō te Wāhi ā-Moana kua Tiakina (MPA) i RTG.	Ko te whāinga, tae rawa ake ki te tau 2035, kua kore e mau pokerehū ngā momo e tiakina ana.
I te tīmata hoki ngā kāwanatanga me ngā kaihaumi moni ki te aro mārire mai ki te wāhi ki ngā pūnaha hauropi moana i te huringa o te āhuarangi, i te whakamauru āhuarangi hoki.	2023 Te whiriwhiri kōrero mō te Mahere Whakahaere Mahinga Ika (FMP).	2025 E whakatinanatia ana te FMP, kua aukatingia te hao ika nekeneke ka pā ki te papa, te hao punga, me te hao pākorokoro.
	I arahina ake e ngā kaitiaki Māori ngā nekehanga nui kia tautokona te whakaoranga, te manawaroa hoki, nā konei te kōtuinga o ngā rāhui me ngā mahi whāomoomo i rauhi ai i te haumanutanga ā-ahurea.	2025 'Puritia ki te whenua' Ka whakatinanatia te rautaki pākaha mō te whāomoomo whenua me te oneone.
		2025 Te ahumoana waro kore.

atu i te hanganga māori i pai ai tō tātou nei ao hei wāhi noho. Nā tēnei mōhiotanga kāore te tiaki moana me te whakaputanga i whakaaro tonuhia hei whakatauritenga whakakapinga tautohe, engari kē ia e reretahi ana te mahi hei hanga i ngā anamata e hauora ana, e taurikura ana hoki. Ko tētahi atu āhuatanga waiwai o te rerenga whakaora ake o Tikapa Moana ko te nui o te mōhiotanga o te marea me te tūhononga ā-tōrangapū i whai i muri mai. I whāia e ngā tikanga ā-ao mō te tuku pūtea me te mahi kaute o ngā 'Parani Kikorangi' te whakatairanga i ngā pakihi toitū ā-hauropi, ā, i tautokona atu ngā tini kaihaumi moni kia mōhio mai rātou ki tō rātou mana hei whakawhakatana tonu i te huringa. I hua tēnei i ngā mahi i tīmatahia ake rā e te Rūnanga i te tau 2023 hei whakawhanake mai i te huinga o ngā kaute pūrawa māori me te uara atu i te whānuitanga o ngā rawa me ngā ratonga e tukuna mai ana e ngā pūnaha hauropi o Tikapa Moana. I pikitia ngā whakamātau tōmua o te miramira i ngā ara e whakawāteahia mai ana e ngā pūnaha hauropi moana mō te huringa o te āhuarangi, mō te whakamauru āhuarangi hoki i tā te kāwanatanga arotahi atu ki ngā otinga māmā noa, e tōtika ana hoki nā te mea 'kāore i rawaka tō tātou mōhiotanga'. He māmā noa te whakahē i te pōturi hoki o te tahuri mai ki ngā whakaaro hou, ki ngā rautaki hou i te tirohanga nō muri mai, engari nā te nui haere o te auau o ngā āwhā me tana whakapiki atu i te parahanga ā-wai rere noa, i te renga hoki, nā ngā pikinga ki ngā pūkahu ngaruru whakakino, nā ngā tahumaero moana hoki i auhi ai a Tikapa Moana, e pā kau



2025-2050

2028 I whakatinanatia ngā tāpiritanga ki te kōtuinga o RTG MPA.	I utua tā ngā kaitiaki Māori uruhi i ngā tini mahi whakahaere e tā te Kāwanatanga ā-motu rautaki Ngaru Kikorangi.	NGĀ MAHINGA IKA KI EBM: Te rautaki Ngaru Kikorangi a te Kāwanatanga (2038). E tautokona ana te ōhanga kikorangi tūturu me ngā kaitiaki Māori.
2029 Ka tino whakarahingia ake te whakaoranga anō o te mātaimai.	Nā te huringa pūtaiao i puta ai te Kaunihera Tohutohu Moana ā-Motu (2030) He whakahaere rohenga motuhake e arotahi nei ki ngā rongoa, e horopū ana – te whāngaihia atu o ētahi kōrero ki ngā tukanga tuku pūtea, te whakamātau i ngā ariā hou, e aroturuki ana i te hanganga mana hautū o Tikapa Moana.	I tīmata ngā pūhohe-koiora ki te nakunaku i ngā moroiti kirihou.
Marine Protected Areas and Spatial Planning Act (2030).		
I tukuna atu te mana tangata ā-ture ki Tikapa Moana (2030).		
2030 Ka tuwhera ake te māketete pereki kua hangā i te paru ā-moana.		
Ko te kaupapa here Sunk Ships mean Slicks (2035).	Nā te whakatahi e whakahaerehia ana ki te kokoru o Tikapa Moana ki uta kua ora anō te 100 km <sup>2</sup> o te kūkūwai paritai me te repo.	

ana ki te ao tūroa, ki ngā tāngata anō hoki.

He hōhonu tonu ngā pānga matatini o te huringa o te āhuarangi ki Aotearoa, ā, he nui ngā aituā o te rohe pātata. Nā tēnei, ka arotahitia te manawaroa o te tūāhanga, ka whakahaerehia te whakatahi i ētahi wāhi takutai, ā, nāwai rā, ka kore te āheinga ki te whai inihua mō ngā rawa wāhi e whakaraerae nei. Nā ēnei huringa, nā ētahi atu anō hoki, i hua māori ake ai te nekehanga o te taupori, ahakoa te pōturi o taua nekehanga rā, ki ngā wāhi o te motu he nui ake te manawaroa ā-āhuarangi. Hei whakaatu i aua huringa ko ngā pānga ki tētahi āhuatanga o te huringa o te āhuarangi - arā, ki te pikinga o te pae moana. Nā te rewa haeretanga o tētahi wāhanga o te papatio Hauāuru o Te Kōpaka ki te Tonga i tere ai te pikinga o te pae moana i 1.5m te teitei ake o ngā tai i te taenga ki te tau 2075 i ērā o te tau 2000, ā, i runga anō hoki i te pikinga o te auau o ngā āwhā me te hotu ā-tai i tawhiti ake ai te taunga o ngā pānga ki uta rā anō. Nā konei te whakahaumarutanga ākau whānui ki ngā wāhanga whai rawa ake o Tāmaki Makaurau, engari nā te utu aukati o te whakahaumaru i te whenua, i ngā kōtuitui huarahi hoki i puta ai te rautaki whakatahi e whakahaerehia ana (arā, he whakaaetanga aromatawai whiwhita kua rurukutia i whai wāhi mai ai ngā kaunihera ā-takiwā, te kāwanatanga ā-motu, ngā kamupene inihua anō hoki). He maha ngā urupā, ngā marae i ngaro atu i whati ai ngā hononga ā-ahurea hira mō ngā tini hapū, mō ngā tini whānau. He maha ngā aituā o te rohe pātata i te ngāhorohoro

iho o ngā ruapara tāone o mua, i nekehia rā ki wāhi kē, i tuku parahanga rā ki ngā takutai anō hoki. Heoi anō, i whakahaumarutia ake ētahi wāhi e whakaraerae ana ki ngā pānga o te pikinga o te pae moana me te hotu āwhā nā ngā mānawa takutai houkura, nā ngā tāhuahua, nā te taha whakamuri o ngā nōhanga kūkūwai o te paritai. Otirā ia, nā te paripari ā-tai ki ngā mānia o Hauraki te whakaoranga hōkai-rahi me te whakatūnga ake anō o ngā nōhanga kūkūwai o te paritai kua kore i kitea i Aotearoa mai i ngā tau o te 1930. I tua atu o te te whakaoranga ake o te nōhanga whakawhitiwhiti e whai tikanga nui whakaharahara ana mai i uta ki tai, nā ēnei kūkūwai paritai, nā ngā repo rei ki uta anō hoki i wātea ai tētahi ara whakaputu waro e tāpua ana. Ahakoa tonu, i huri kau tō tātou kōtuinga tūnuku nā te hotu āwhā me te paripari ā-tai. Nā ētahi mata anake o te tai i taea ai te haere mā te maha o ngā huarahi, ā, i piki haere te whakamahinga o ngā waka kōpiko ā-hiko, ā-hauwai takutai me ngā tēkehi wai hei tūhono i ngā taupori takutai. Ko te otinga ā-pāpori matua o ēnei whētuki ā-āhuarangi, ko te mōhio me tū rawa hei āhuetanga māori noa tēnei mea, te noho ngātahi mai ki te taiao me te urutau atu ki te huringa taiao. I whai wāhi atu hoki tēnei ki te nekehanga tē taea te aha i ngā tauira ohaoha i kōkiri atu rā i te pāpori ki te whakapakari i te raukaha ā-pāpori-hauropi kia urutau ai ki te huringa, ki te nekehanga atu hoki i te aro ake ki te takahuirangi mō te ratonga rawa hei parahau mō te whakapau tere i aua rawa rā.

I whai tikanga nui whakaharahara ki te whakapakari i te manawaroa o Tikapa Moana, me tōna raukaha ki te urupare ki ngā whētuki āhuarangi nei, te mahi matakite a ngā kaitiaki Māori. I te hauwhā tuatahi o te rautau 21, i te hiahia ngā iwi maha nō Tikapa Moana ki te whakaora ake i ō rātou rohe moana i puta ai tētahi kōtuinga o ngā rāhui, o ngā moana tāpui whāomoomo i piki ake ai te nui o te kai moana puta noa i te whānuitanga o Tikapa Moana. Ko te hoa haere o te whakaora i te ao tūroa nei ko te haumanu ā-ahurea. Nā konei i whakakorengia ai ngā tikanga whakamōtī o te hao ika i Tikapa Moana, ka whāia kētia ngā tikanga i iti ake ai ngā tapuwae hauropi. Ka tere huri te aronga atu ki te hao ika hei wāhanga tonu mō tētahi ara whakahaere pūtaka-pūnaha hauropi ā-torowhānui e arotahi ake ana ki te whakapakari i te manawaroa pūnaha hauropi, me te whai whakaaro ki ngā mea whakataumaha taiao katoa, ahakoa he mea māori, ahakoa rānei he mea i pūtatea mai i tā te tangata mahi. Tae rā anō ki te tau 2050 kua puta mai i ngā mahi whakaora i a Tikapa Moana ngā pikinga ohaoha e tāpua ana ki te katoa. I utua tā ngā kaitiaki Māori uruhi i ngā tini mahi whakahaere e tā te Kāwanatanga ā-motu rautaki Ngaru Kikorangi, ā, i tautokona te whakaoranga ake o ngā papa tipa o Tikapa Moana nā te whakawhanaketanga o tētahi kohinga tipa onge e rukuhia ana e whakaputa ana i te hua kounga mō ngā wharekai nui te utu ki Hangahai, ki Parī, ki Hana Paraniko, ki McMurdo hoki. Nā te engaenga o ngā painga o ngā wāhi rāhui rā i pakari ake ai, i tau tonu ai hoki te maha

o ngā ika puta noa i Tikapa Moana. Ko te āhua nei, he kaha ngā kōrero pai mō ngā mahi nei e pā ana ki te mana o Tikapa Moana, ki ōna iwi, nā ka whai te tokomaha i mātauranga kē atu anō, ka kitea ake i te ara wātea i ngā ōhanga whakaora. I te tau 2050, i arohia a Aotearoa hei kaiārahi mō te ao whānui i te āhua o te mana hautū moana, i ngā rautaki moana e pā ana ki te urutau huringa o te āhuarangi. Nō konei te whakahounga anō ā-ahurea mō Tikapa Moana, ā, i whai painga mai te katoa i runga tonu i tana wawata pae tawhiti, i tana whirinaki ki ngā mātāpono o ngā āhuetanga o te pūnaha hauropi, i tana whakaū nei i te wāhi waiwai kei ngā kōtuitui, kei ngā hononga, kei te whakahaere auaha, he mea urutau hoki. Ko tēnei e whakaatu ana i te āhua o te mahi pai, o te whanonga whakauruuru, o te arotahi hoki ki te haepapatanga i runga ake i ngā mana ā-ture hei mea whai take nui ki te whakaterere huringa.

I kitea ake, puta noa i te pāpori, te āhua o te mōhiotanga, o te mīharo ake, o te tūhuratanga atu hoki o Tikapa Moana, i runga i te pikinga ake o te āheinga ki ngā hangarau hou, ki te ao mariko, ki te ao niko, ki ngā matatopa ā-raro wai me ngā waka whakaterere e whaiaro ana. Nā konei i wātea ai te tūhuratanga me ngā ara ako puta noa atu i te pāpori. Nā te whakapiki i te whai wāhitanga mai mō te anamata o Tikapa Moana nā te pūtaiao kirirarau, nā ngā kaupapa tāpoi whakaora i kīnaki mai te aroturuki i te āhua o Tikapa Moana i tipu rā i te ruarua o ngā kitenga ā-mātai moana, i ngā hōtaka aroturuki i te rāhui moana me te wahapū hoki, e pēnei nei tōna āhua o nāiane, i

arā, ko te mau raraunga o taua wā tonu me te whakamāramatanga ake hoki i te horopaki o ngā mahi me ngā ia. Kua whakatutukihia tēnei nā te whakamahi i ngā āmiorangi-riki motuhake, i ngā wāhi tūtainga, i ngā matatopa motuhake ā-manu, ā-raro wai anō hoki. Whai tikanga nui whakaharahara ai ngā huringa o te pūtaiao i te tau 2025 mō te rongoā i ngā raru e pā ana ki te whakatipu mātauranga, ki te tuku mātauranga, ki te whakahāngai atu ki ngā rongoā mō ngā mate o te taiao. I whai tikanga nui whakaharahara hoki aua huringa kia houtupu te tautoko me te tuku pūtea ki ngā iwi hei whakapakari i tō rātou raukaha ki te mahi whakahaere ā-moana. Nā te whakawhanaketanga o ngā tukanga arotake whaimana ā-ao, i pākaha ai te whai wāhi mai a ngā mātanga, nā te whakamana i ngā patuinga ā-pāpori me te tautoko i te whakatinanatanga o ngā hangarau pārongo hou, i puta ai te tere o te kōkiri, o te urupare, me te noho haepapa anō hoki a ngā pokapū whakahaere. I noho pū ki taua whakawhitinga mai te ope mahi moana i rurukuhia ā-motuhia rā, me te whakawhanaketanga o te Kaunihera Tohutohu Moana ā-Motu – i tū mai rā hei whakahaere rohanga motuhake e horopū ana e whāngaihia ai he kōrero ki ngā tukanga tuku pūtea, i te whakatinanatanga me te whakamātau hoki i ngā ariā hou, i ngā momo tūhononga hou anō hoki puta noa i te pāpori.



E kōkirihi ana te whakawhanaketanga e whānui haere ana mō ngā repo nā te pūtea nō ngā paremata waro.

Kua whakatutukihia te whāinga a te Kotahitanga o Ngā Iwi o te Ao kia tōraro te waro.

Whenua Moana e Rahi ana mō te mana hautū ā-moana, mō ngā rautaki ā-moana mō te huringa o te āhuarangi anō hoki.

2080 Kua whakaorangia te 50% o te papamoana.

Kua kore i hohe te mahi whakaora. Kua whakaorangia te 75% o te papamoana.

Ka tīmata te hanganga ahumoana ki te tautoko i te noho pāhekoheko.

Te tikanga kaute tuku pūtea ā-ao a ngā Parani Kikorangi.

Ka eke a Tikapa Moana ki te 80% mō ngā tohu o te mauri.

Kua konihi kore te tuawhenua nā reira i tū mai ai ngā kaupapa rahi mō te whakaora manu moana.

Karekau he momo o Tikapa Moana e mōrearea ana ki te korehāhā ā-whaitake.

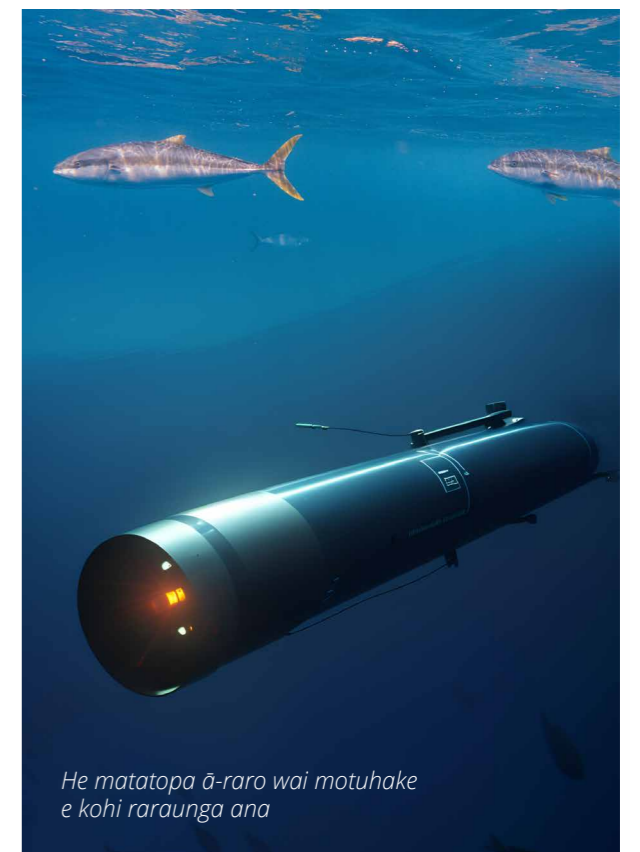
Kua whanake mai ngā mākete parakiwai mō te whakamauru i te Pikinga o te Pae Moana.

Ka whakawhiwhia a Aotearoa e te Kotahitanga o Ngā Iwi o te Ao ki te Tohu Ārahi mō ngā

E pai ana te mahi a ngā mahinga ika, a ērā atu mahi ohaoha hoki ki Tikapa Moana e tutuki ai te Whakaputunga Waro Mōrahi.

E whakamahia mai ana te māhanga matihiko a HGMP e ngā tini rōpū hei whakamōhio atu i te tautohe, hei whakaōrite nei i te tautika-kore, hei aro hoki ki ngā mahi mō te anamata o Tikapa Moana e huri haere ana, engari e ora ana hoki.

Nā ngā kōkiritanga i te koiora ā-aranga anō i hoki mai ngā kāhui Miuweka, ngā rāngai kororā hoki o Waitaha ki Tikapa Moana.



He matatopa ā-raro wai motuhake e kōhi raraunga ana



# 2023

## He pūnaha hauropi e oke ana, e ora nei tātou


Ka whakaaturia e ngā ia te hekenga o te kanorau koiora me ngā ratonga pūnaha hauropi i runga i ā tātou mahi

Te parahanga

Te unuhanga

Te pananga

Ngā pānga ā-āhuarangi

 E hēmanawa ana ngā tāngata e noho haepapa ana mō te whakahaere i ngā pānga moana, mō te whakawhanake i ngā anamata ā-ōhanga kikorangi hoki. Kāore i te puta mai i ngā hui me ngā pūrongo te mahi pai e taea ai te huringa.



Mā te kanorau o ngā uara e ara ai te whakataetae, te whakauauatanga, te korenga o te mahi, te korenga hoki o te mōhio ki tā Tikapa Moana tautīnei mai nei i a tātou. Kāore i te whakamātāmuahia te whakahaere ā-moana e rurukutia ana.

Te whakaritenga ā-āhuarangi

Te kai

Te whakaputanga hāora

Te huringa taiora

Te mahi ā-rēhia



Kāore ngā whakahaere i te mahi ngātahi mō ngā mahi whakaora kia pai te pānga atu ki te taiao



Kāore i te whakatipuria te mahi ā-oahaoha hei āwhina i te taiao me ngā hapori



Kāore ngā kaihaumi moni i te ākina kia tautoko i ngā kaupapa e pai nei te pānga atu ki te taiao

# 2173

## He pūnaha hauropi taurikura e noho nei tātou katoa

Ko te marea kua whai mōhio, ka uara i ngā ratonga pūnaha hauropi e puta ana i te moana



E whakaarotia ana te pae tawhiti, e whakautetia ana hoki ngā uara kanorau e ngā tāngata e noho haepapa ana mō te whakahaere i ngā pānga ki te moana, i ngā ōhanga kikorangi hoki puta noa i ngā whakahaere.

E whakahaerehia ana ngā pānga katoa e ahu mai ana i ā tātou mahi, kua whakahoungia ngā ratonga

Te whakaritenga ā-āhuarangi

Te mīhara

Te whakaputanga hāora

Te ahurea

Te mahi ā-rēhia

Te kai

Te huringa taiora



E whakaurua atu ana ki te mahi whakamahere ngā painga o te noho ngātahi mai ki a Tikapa Moana, kua ko te tango noa iho i ōna rawa



E arotahingia ana ngā mahi whakaora i te pūnaha hauropi i te wā tonu e mataara ana ki ngā raru e puta mai ana



Te whakamahinga o te pūtaiao ā-moana, o ngā taputapu tika hoki hei whakaheke iho i te tutūtanga o te puehu



Te whakamahinga o te mātauranga Māori hei hanga i tētahi anamata pai ake



## Ka Hoki mai i te Anamata

He rahi, he kanorau hoki te hōkai moana o Tikapa Moana, ā, he maha ngā ara e tūhonohono ai tātou ki te moana, e ako ai hoki tātou i te moana nei. Mēnā ka taea e tātou te whakatere ngā kōwhiringa, ngā āhuetanga hoki ki te anamata pērā i tā mātou i pohewatia ai i konei, he nui ake te tūponotanga o te tā ngā mokopuna a ā tātou mokopuna i te tikitū o te tātahi, i te mārāma o te wai, i te ranea o te kaimoana, i te kaha o ngā hapori pātata, i te whai painga o ngā ōhanga ki ngā tāngata me te ao tūroa anō hoki.

Me tū tātou katoa hei tūpuna pai, hei tūpuna e tika ana kia maumaharatia.

Ko te 150 tau e heke mai ana, pērā i te 150 tau kua pahure ake, ko te wā o te huringa nui ā-pāpori, ā-taiao hoki. He maha ngā ara ka taea te whai, engari i muri i te 'raumati' o te tau 2023 e mārāma ana te mātua whai kia arotahi tātou ki te whakapakari ake i te manawaroa, ki te whakarite mai i a tātou nei mō te huringa atu. Ki te kore e taea tā tātou aronga te huri, e tinga ana tō tātou taunga atu ki te āhuetanga poautinitini o te kikopoke o te whai tonu i te ara e whāia kētia ana. E whirinaki ana te huringa nui whakaharahara o te aronga ki ngā aituā taiao ā-ao ki te āheinga o ngā tāngata, o ngā whakahaere hoki ki te kite, ki te whakatau iho hoki i ngā uara kanorau o te ao tūroa, me ngā tukunga nā te ao tūroa nei ki te tangata. E pēnei ai, me mātua tautoko ngā mahi pae tawhiti hei whakapakari i te manawaroa, hei ako hoki i te pai o te noho ki te ao ko ōna rawa ka tae ki tōna mutunga ā taihoa. Ki te pai haere tonu ā tātou tikanga taiao o nāianei, e tika ana kia māia ake tātou i te whakarereanga ihotanga o te taiao pai ki ngā reanga whakaheke.

Kāore te hēmanawatanga ki te poto rawa o te ahunga whakamua i ngā mahi whakaora i a Tikapa Moana i te whakaatu tika i te hōhonu o te āwangawanga me te mārāma anō ki te korenga o ētahi kōwhiringa anō mā tātou atu i te tohe.

– Ahorangi Simon Thrush (Waipapa Taumata rau)  
& Ahorangi Conrad Pilditch (Te Whare Wānaga o Waikato)



He mea whakatōpū e STET, mai i ngā tini tauria, ngā atahanga ka whakaputaina e te atamai hangahanga mō tēnei pūrongo. E hiahia ana rātou ki te mihi ki ngā rau ringatoi, ki ngā rau kaiwhakaahua nā ā rātou mahi ngā tauria i whakangungua ai, ki ngā kaiwhakawhanake nā rātou te pūmanawa nei i herekore ai. Nā ā rātou mahi te kounga me te nui o ngā atahanga i tēnei pūrongo i piki ake ai.